



Department of Public Works
City Engineering Division

608 266 4751

Robert F. Phillips, P.E.
 City Engineer

City-County Building, Room 115
 210 Martin Luther King, Jr. Boulevard
 Madison, Wisconsin 53703
 FAX 608 264 9275
 www.cityofmadison.com

Assistant City Engineer
 Michael R. Dailey, P.E.

Principal Engineers
 Christina M. Bachmann, P.E.
 John S. Fahrney, P.E.
 Gregory T. Fries, P.E.
 Christopher J. Petykowski, P.E.

Facilities & Sustainability
 Jeanne E. Hoffman, Manager
 James C. Whitney, A.I.A.

Operations Supervisor
 Kathleen M. Cryan

GIS Manager
 David A. Davis, R.L.S.

Financial Officer
 Steven B. Danner-Rivers

Hydrogeologist
 Brynn Bemis

NOTICE OF ADDENDUM

CONTRACT NO. 6854

ADDENDUM NO. 1

Addendum No. 1 includes the additional work to install and remove plantings at the Warner Park Lady Liberty Plaza.

A. PROPOSAL PAGE

Add the following additional items to the proposal.

PROJECT: WARNER PARK LADY LIBERTY PLAZA								
Plants		Installation Season		Size	Root	Unit Price	Quantity	Total
Botanical Name	Common Name	Spring	Fall					
Evergreen Trees								
Juniperus scopularum 'Wichita Blue'	Wichita Blue Upright Juniper	X		4' Ht.	B&B		6	\$0.00
Shrubs								
Rosa 'Radrazz'	Knock Out Rose	X		2 Gal.	Container		18	\$0.00
Spiraea albiflora	Japanese White Spirea	X		2 Gal.	Container		48	\$0.00
Perennials and Grasses								
Calamagrostis aculiflora 'Karl Foerster'	Karl Foerster Feather Reed Grass	X		1 Gal.	Container		13	\$0.00
Hosta x 'Hadspen Blue'	Hadpen Blue Hosta	X		1 Gal.	Container		10	\$0.00
Materials								
Bid Item Number	Bid Item				Bid Unit	Unit Price	Estimated Quantity	Total
90001	Remove Existing Landscaping	X			LS		1	\$0.00
20701	Terrace Seeding	X			SY		14	\$0.00
SUBTOTAL								\$0.00
TOTAL COST								\$0.00

B. PLANS

Insert Sheet L-1 Project Titled Warner Park Lady Liberty Plaza Plantings.

C. SECTION D: SPECIAL PROVISIONS

Add the following additional project to Section D Special Provisions:

WARNER PARK-LADY LIBERTY PLAZA

SECTION 109.2: PROSECUTION OF THE WORK

The plantings around the Warner Park Lady Liberty Plaza shall occur in spring 2012. The Contractor shall wait for authorization from City Staff prior to beginning any work for the Warner Park Lady Liberty Statue. The planting installation must be installed after volunteers/staff have restored the monument base and power washed the existing concrete, but prior to the Flag Day Opening Ceremony on June 14, 2012. All plantings shall be installed per the special provisions of this contract and City of Madison Standard Specifications for Public Works Construction. Note that the Contractor shall follow the special provisions in this contract in place of Article 209 of the City of Madison Standard Specifications for Public Works Construction.

BID ITEM-90001 PLANT REMOVAL

DESCRIPTION

Currently, there are existing shrubs and perennials within plant beds at the Lady Liberty Plaza. This bid item includes removal of the existing approximate 364 square feet of existing plants in existing plant beds. Removal shall include removing the majority of the root ball below ground and removing all above ground vegetation.

One of the existing plant beds will be replanted with shrubs, grasses and perennials as indicated on plans and in the proposal. The other plant bed will be seeded with turf seed. Turf seeding shall be paid under BID ITEM-20701 Terrace Seeding.

METHOD OF MEASUREMENT

Plant Removal shall be measured as a lump sum for the work described above.

BASIS OF PAYMENT

Plant Removal shall be paid at the contract unit price for work described above and shall include all work, materials, labor, delivery, disposal and incidentals.

BID ITEM - 20701 TERRACE SEEDING

DESCRIPTION

Work under this item shall include all work, materials, installation and delivery to restore an existing plant bed (identified on plans) to lawn. This includes seeding, fertilizing and mulching this area.

METHOD OF MEASUREMENT

Terrace Seeding shall be measured per square yard for work described above.

February 23, 2012

Page 3

BASIS OF PAYMENT

Terrace Seeding will be paid at the contract unit price for work described above and shall include all work, materials, labor, delivery and incidentals.

Revise and amend the contract document(s) for the above project as stated in this addendum, otherwise, the original document shall remain in effect.

Please acknowledge this addendum on page E1 of the contract documents.

Electronic version of these documents can be found on the City of Madison web site at:

<http://www.cityofmadison.com/business/PW/contracts/openforBid.cfm>

If you are unable to download plan revisions associated with the addendum, please contact the Engineering office at 608-266-4751 receive the material by another route.



Kevin Briski, Parks Superintendent

City of Madison
 Department of Public Works
 Parks Division
 Public Works Contract: 6854

REVISED 2/24/12

CONTRACTORS NAME

PROJECT: DOOR CREEK PARK LANDSCAPING								
Plants		Installation Season						
Botanical Name	Common Name	Spring	Fall	Size	Root	Unit Price	Quantity	Total
<i>Trees</i>								
Amelanchier x grandiflora	Serviceberry	X		5' Ht.	B&B		1	
Juniperus virginiana 'Emerald Sentinel'	Emerald Sentinel Eastern Red Cedar	X		4' Ht.	B&B		5	
Juniperus virginiana 'Burkii'	Burk Eastern Red Cedar	X		4' Ht.	B&B		3	
Ostrya virginiana	American Hophornbeam	X		2" Cal.	B&B		2	
Prunus pensylvanica	Pin Cherry	X		1" Cal.	B&B		7	
Quercus bicolor	Swamp White Oak	X		2" Cal.	B&B		2	
Quercus macrocarpa	Bur Oak	X		2" Cal.	B&B		1	
SUBTOTAL								
PROJECT: GARNER PARK BUILDING LANDSCAPING								
Plants		Installation Season						
Botanical Name	Common Name	Spring	Fall	Size	Root	Unit Price	Quantity	Total
<i>Shrubs</i>								
Hydrangea arborescens Invincibelle® Spirit	Invincibelle Spirit Smooth Hydrangea	X		2 Gal.	Container		7	
Spirea japonica 'Neon Flash'	Neon Flash Spirea	X		2 Gal.	Container		5	
<i>Perennials and Grasses</i>								
Calamagrostis acutiflora 'Karl Foerster'	Karl Foerster Feather Reed Grass	X		1 Gal.	Container		8	
Hosta 'Francee'	Francee Hosta	X		1 Gal.	Container		5	
Liriope spicata	Creeping Lilyturf	X		1 Gal.	Container		250	
Sedum spectabile 'Neon'	Neon Stonecrop	X		1 Gal.	Container		8	
Sporobolus heterolepis 'Tara'	Tara Prairie Dropseed	X		1 Gal.	Container		13	
Schizachyrium scoparium 'The Blues'	The Blues Little Bluestem	X		1 Gal.	Container		28	
<i>Materials</i>								
Bid Item Number	Bid Item				Bid Unit	Unit Price	Estimated Quantity	Total
20701	Terrace Seeding	X			SY		123	
90001	Area C Mulch and Plant Removal	X			SY		40	
90002	Boulder Removal	X			EACH		14	
SUBTOTAL								

City of Madison
 Department of Public Works
 Parks Division
 Public Works Contract: 6854

PROJECT: GIDDINGS PARK LANDSCAPING

Plants		Installation Season		Size	Root	Unit Price	Quantity	Total
Botanical Name		Spring	Fall					
<i>Canopy Trees</i>								
Quercus rubra	Red Oak	X		1 1/2" Cal.	B&B		2	
Celtis occidentalis	Hackberry	X		2" Cal.	B&B		1	
<i>Understory Trees</i>								
Carpinus caroliniana	American Hornbeam	X		1 1/4" Cal.	B&B		3	
SUBTOTAL								

PROJECT: HERITAGE HEIGHTS LANDSCAPING

Plants		Installation Season		Size	Root	Unit Price	Quantity	Total
Botanical Name		Spring	Fall					
<i>Canopy Trees</i>								
Quercus bicolor	Swamp White Oak	X		1 3/4" Cal.	B&B		1	
Gymnocladus dioica	Kentucky Coffeetree	X		2" Cal.	B&B		1	
<i>Understory Trees</i>								
Carpinus caroliniana	American Hornbeam	X		1 1/4" Cal.	B&B		1	
SUBTOTAL								

PROJECT: MONONA PARK LANDSCAPING

Plants		Installation Season		Size	Root	Unit Price	Quantity	Total
Botanical Name		Spring	Fall					
<i>Shrubs</i>								
Thuja occidentalis 'Techny'	Techny Arborvitae	X		4' Ht.	B&B		4	
<i>Ornamental Trees</i>								
Syringa reticulata 'Ivory Silk' Tree	Ivory Silk Japanese Tree Lilac	X		1 1/2" Cal.	B&B		2	
SUBTOTAL								

City of Madison
 Department of Public Works
 Parks Division
 Public Works Contract: 6854

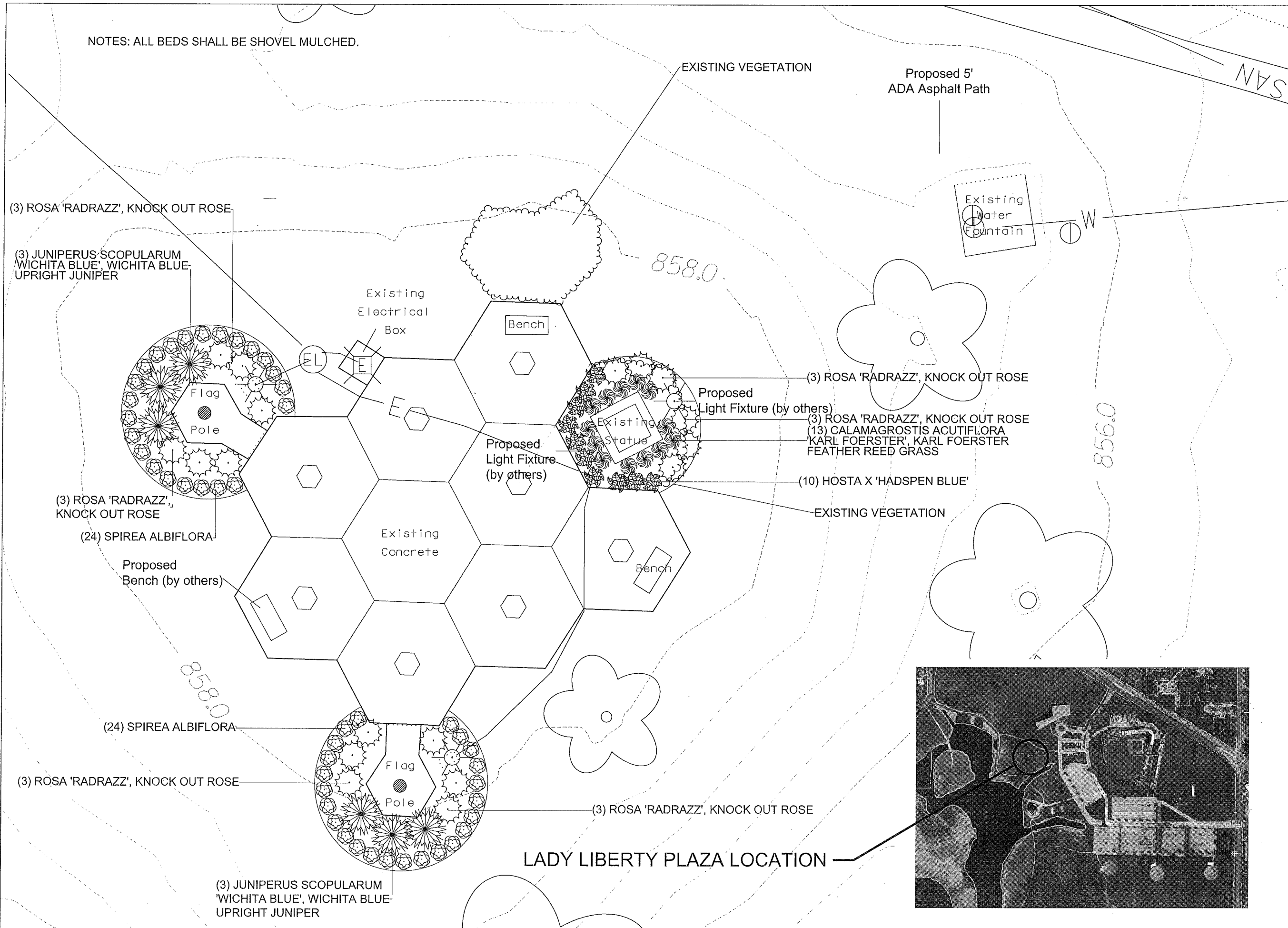
PROJECT: SANDSTONE PARK LANDSCAPING

Plants	Botanical Name	Installation Season		Size	Root	Unit Price	Quantity	Total
		Spring	Fall					
Evergreen Trees								
	Pinus resinosa	Red Pine	X	4' Ht.	B&B		3	
Canopy Trees								
	Quercus bicolor	Swamp White Oak	X	2" Cal.	B&B		1	
	Quercus rubra	Red Oak	X	2" Cal.	B&B		2	
	Celtis occidentalis	Hackberry	X	2" Cal.	B&B		2	
	Gymnocladis dioica	Kentucky Coffeetree	X	2 1/2" Cal.	B&B		1	
Ornamental Trees								
	Carpinus caroliniana	American Hornbeam	X	1 3/4" Cal.	B&B		5	
	Malus x zumi 'Calocarpa'	Zumi Calocarpa Crabapple	X	1 1/2" Cal.	B&B		4	
	Malus 'Indian Magic'	Indian Magic Crabapple	X	1 1/2" Cal.	B&B		3	
SUBTOTAL								

PROJECT: TENNEY PARK PARKING LOT LANDSCAPING

Plants	Botanical Name	Common Name	Installation Season		Size	Root	Unit Price	Quantity	Total
			Spring	Fall					
Trees									
	Amelanchier x grandiflora 'Autumn Brilliance', tree form	Autumn Brilliance Serviceberry, Tree Form	X		2 1/2" Cal.	B&B		1	
	Quercus alba	White Oak	X		2 1/2" Cal.	B&B		2	
	Quercus bicolor	Swamp White Oak	X		2 1/2" Cal.	B&B		6	
Grasses and Perennials									
	Baptisia australis	Blue False Indigo	X		1 Gal	Container		19	
	Baptisia lactea	White False Indigo	X		1 Gal	Container		25	
	Carex comosa	Bottlebrush Sedge	X		4"	Plug		150	
	Carex stipata	Awl Fruited Sedge	X		4"	Plug		150	
	Carex vulpinoidea	Fox Sedge	X		4"	Plug		150	
	Carex vulpinoidea	Fox Sedge	X		1 Gal	Container		21	
	Echinacea purpurea	Purple Coneflower	X		1 Gal	Container		45	
	Liatris pycnostachya	Prairie Blazingstar	X		1 Gal	Container		50	
	Liatris spicata	Dense Blazingstar	X		1 Gal	Container		28	
	Monarda fistulosa	Beebalm	X		1 Gal	Container		38	
	Panicum virgatum	Switchgrass	X		4"	Plug		150	
	Rudbeckia fulgida	Orange Coneflower	X		1 Gal	Container		18	
	Rudbeckia hirta	Black Eyed Susan	X		1 Gal	Container		22	
	Schizachyrium scoparium 'The Blues'	Pin Cherry	X		1 Gal	Container		49	
	Sedum 'Autumn Joy'	American Hophornbeam	X		1 Gal	Container		44	
	Sorghastrum nutans	Indiangrass	X		4"	Plug		150	
Materials									
	Bid Item Number					Bid Unit	Unit Price	Estimated Quantities	
	90003	Boulder Installation	X			EA		14	
SUBTOTAL									

NOTES: ALL BEDS SHALL BE SHOVEL MULCHED.



City of Madison
 Department of Public Works
PARK DIVISION

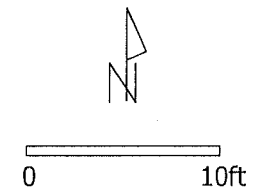
City-County Building, Suite 104
 210 Martin Luther King, Jr. Blvd.
 PO Box 2987
 Madison, WI 53701-2987

play
**MADISON
 PARKS**

PROJECT:

*Warner Park
 Lady Liberty Plaza
 Plantings*

**WARNER PARK
 1511 NORTHPORT
 DRIVE
 MADISON, WI 53704**



ITEM	DATE
Drawn by: ADD	JULY 21, 2011
Revised by: SCLL	2.15.2012

6854

SHEET TITLE:
**OVERALL
 LANDSCAPE PLAN**

SHEET NUMBER:
L-1